

DeZwarteHond.
urbane gestalt - landschaftsarchitekten

Gartenstadt Werdersee

Planungswerkstatt am 15.04.2015





An aerial perspective of a city model. The buildings are represented as white rectangular blocks arranged in a grid. Green trees are scattered throughout the blocks and along the streets. A road with a dashed line runs vertically on the right side. Three callout boxes with black backgrounds and white text are overlaid on the image. The first callout, labeled 'Gebäude', has a white 3D box icon pointing to a building. The second callout, labeled 'Freiraum', has a white line-art icon of two trees pointing to an open area. The third callout, labeled 'Verkehr', has a white dashed arrow icon pointing to the road.

Gebäude

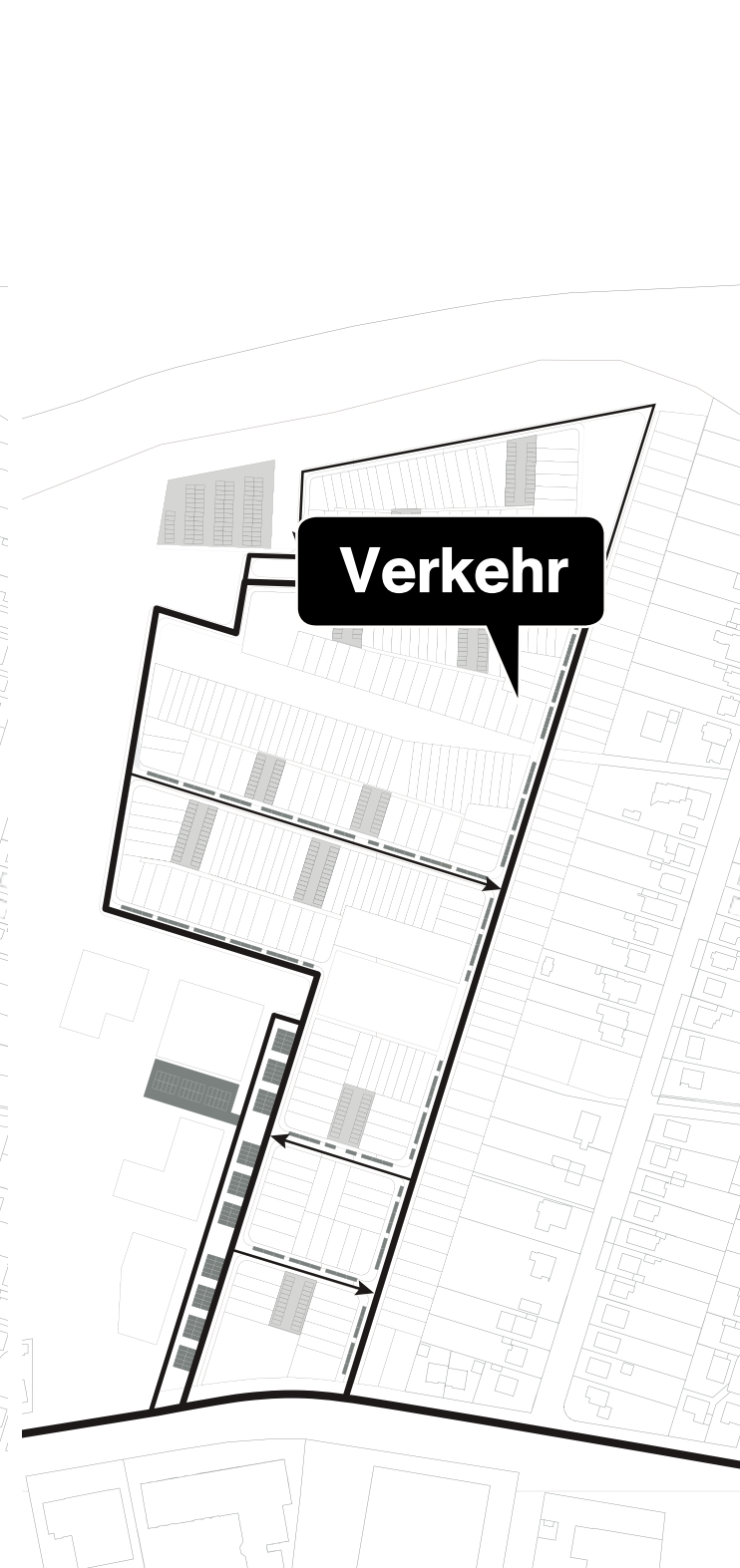
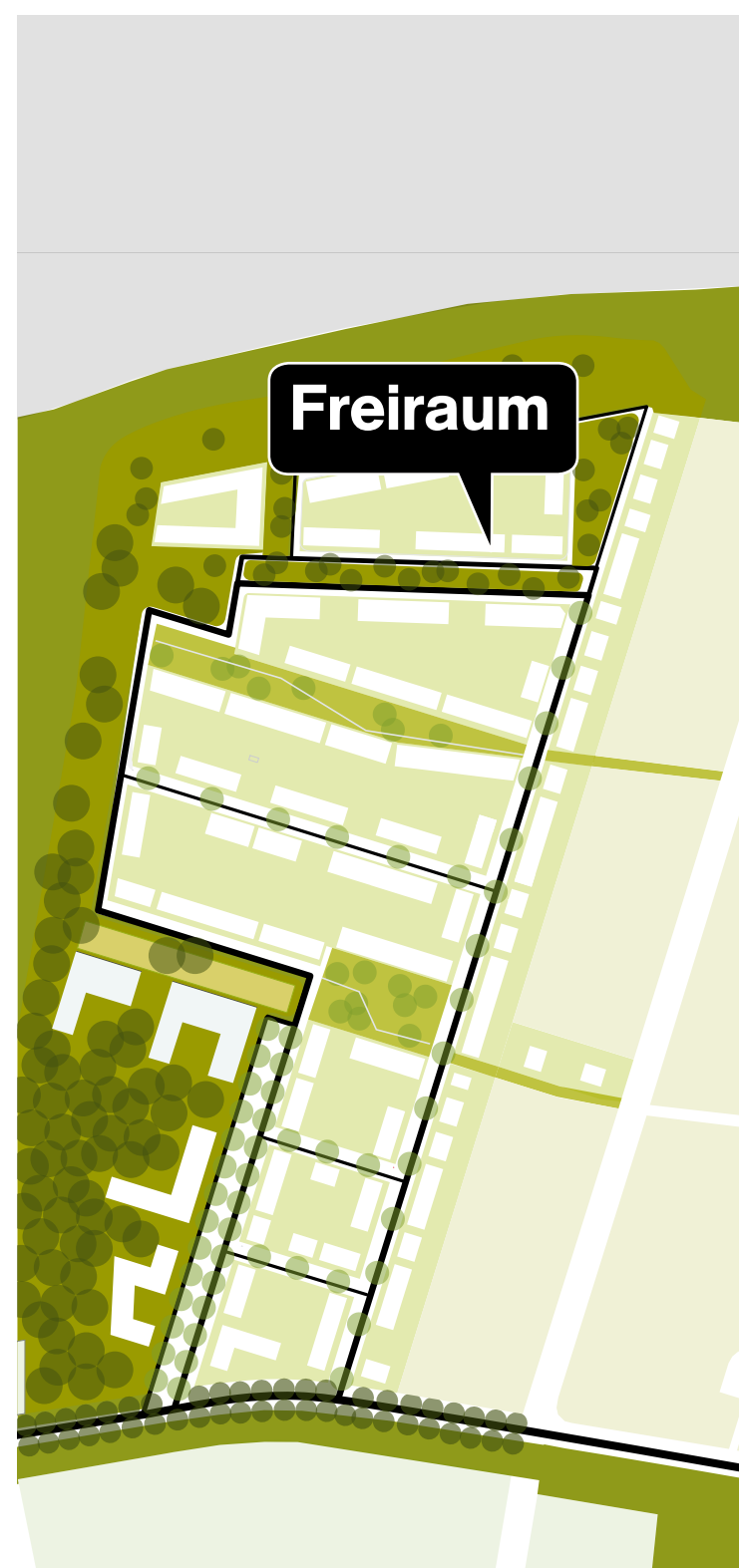
Freiraum

Verkehr

Freiraum

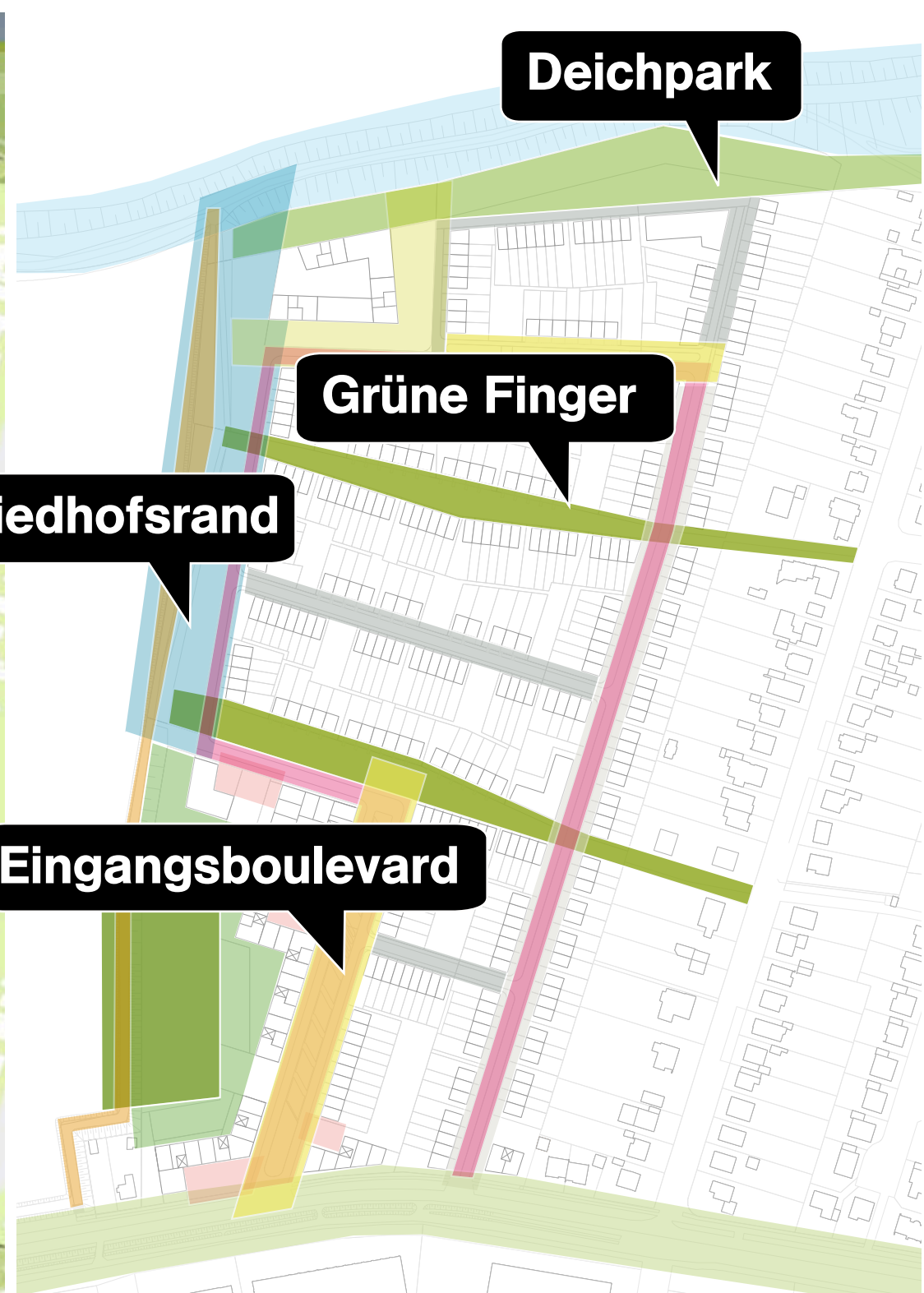
Gebäude

Verkehr





Freiraum

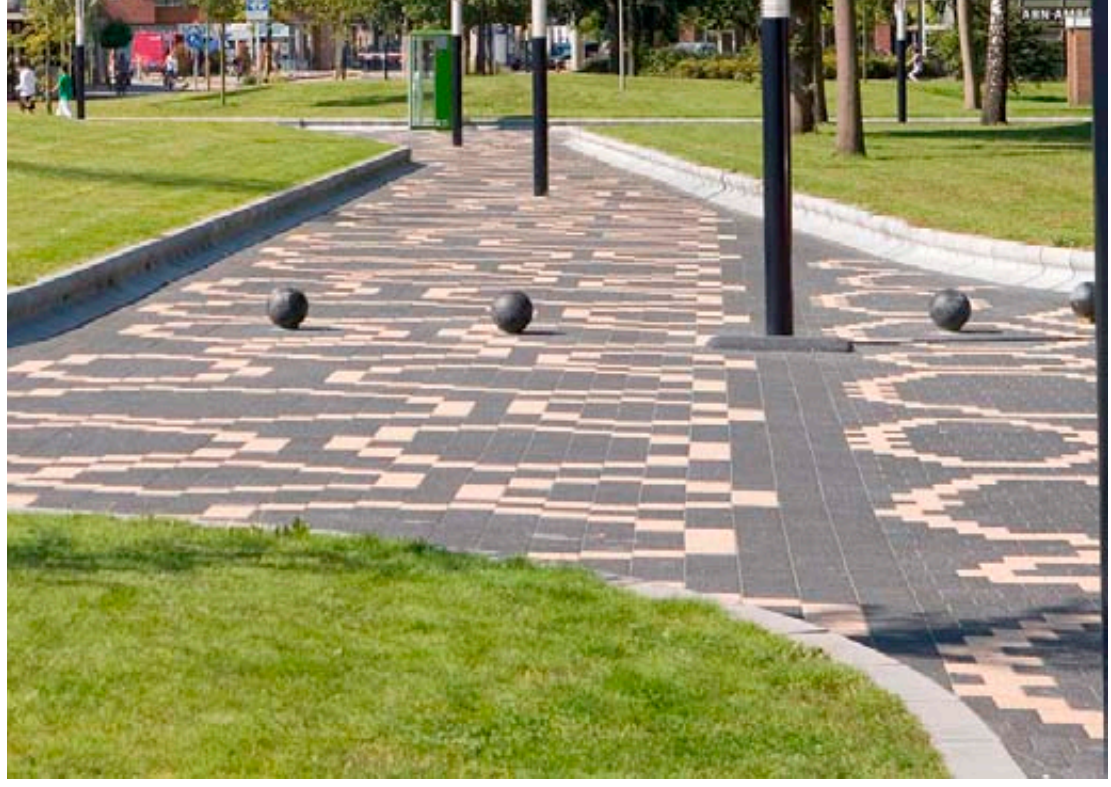


Eingangsboulevard



An architectural model of a boulevard. The scene features a paved walkway with a white tactile paving strip. To the left, there is a green lawn area with several red, rounded, block-like objects. A bare, grey tree stands on the lawn. A red human figure is positioned on the walkway. A black speech bubble with white text is overlaid on the scene. In the background, there are streetlights and a large, light-colored building facade.

Eingangsboulevard



Groene Wig Stadskanaal

Grüne Finger

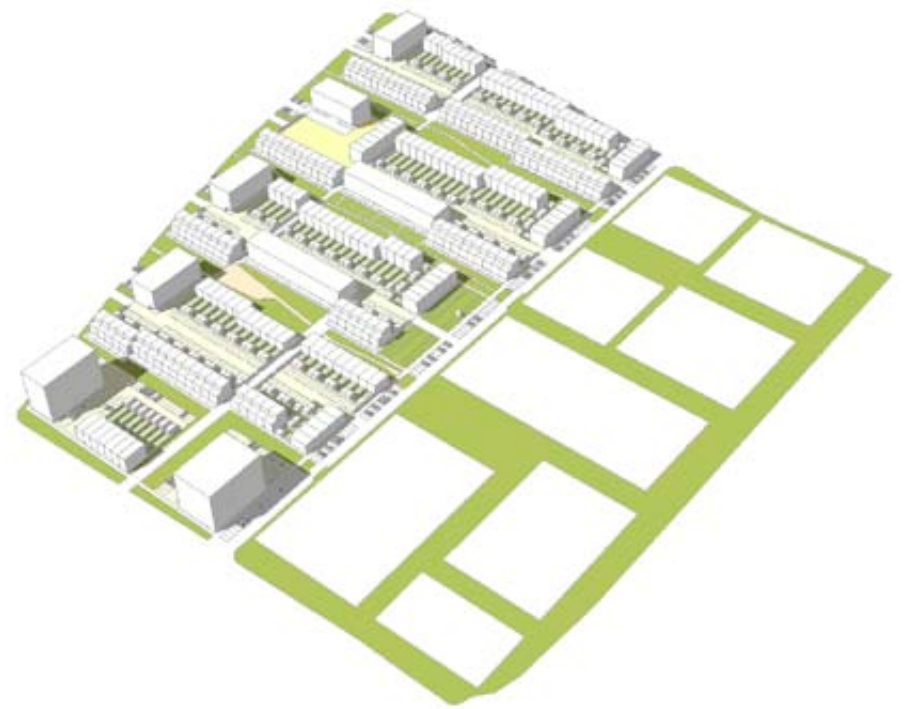


An architectural model of a park or urban space. The model is set on a white base. On the left, there are several white, rectangular blocks representing buildings. In the center and right, there is a green lawn area with several trees made of light-colored, bare branches. A brown path winds through the lawn. Several small, red, stylized human figures are placed on the lawn and path. A black speech bubble with white text is positioned in the middle-right of the image.

Grüne Finger



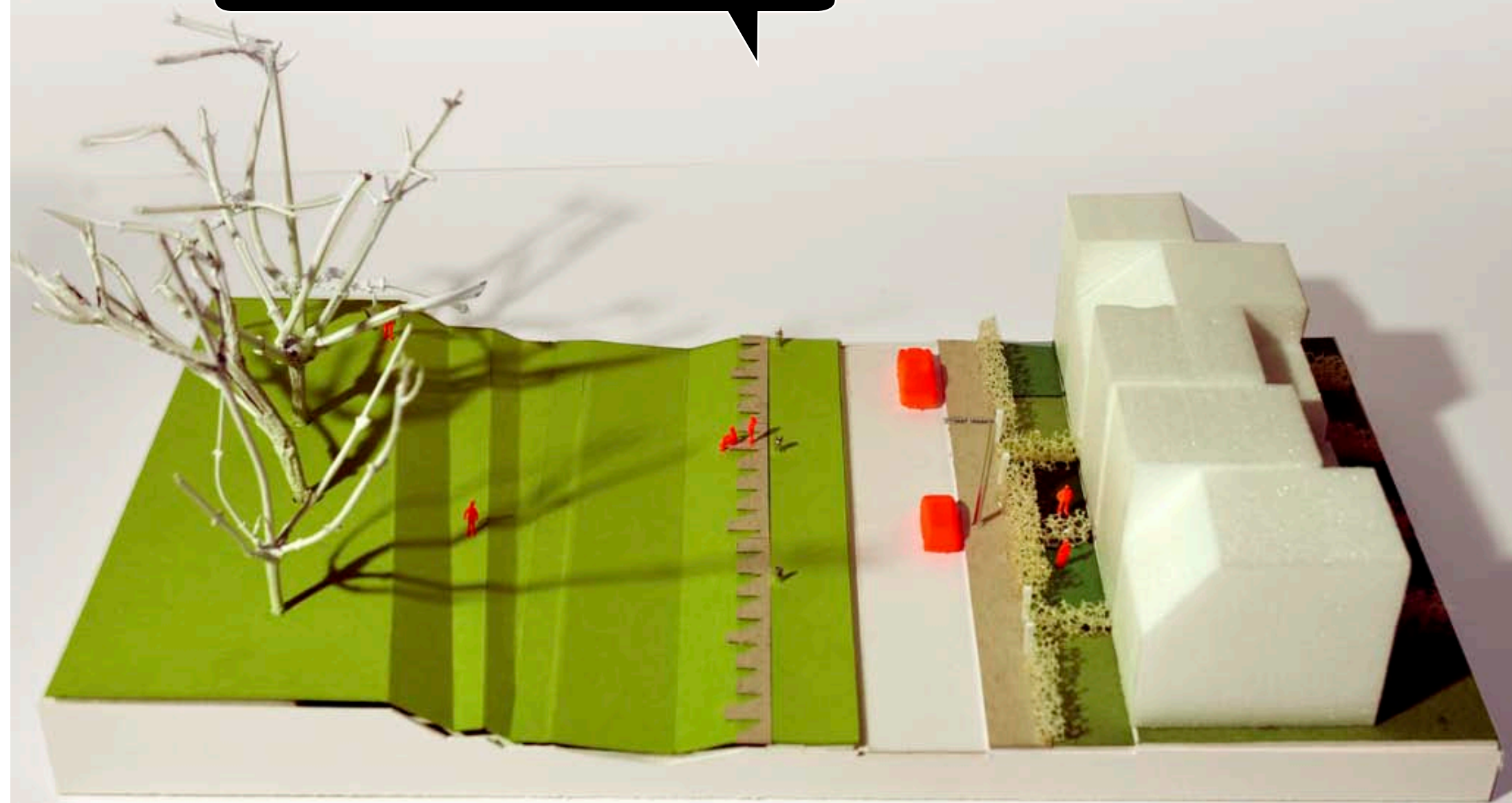
Gemeinschaft, Retention, Spielen, Wohnen



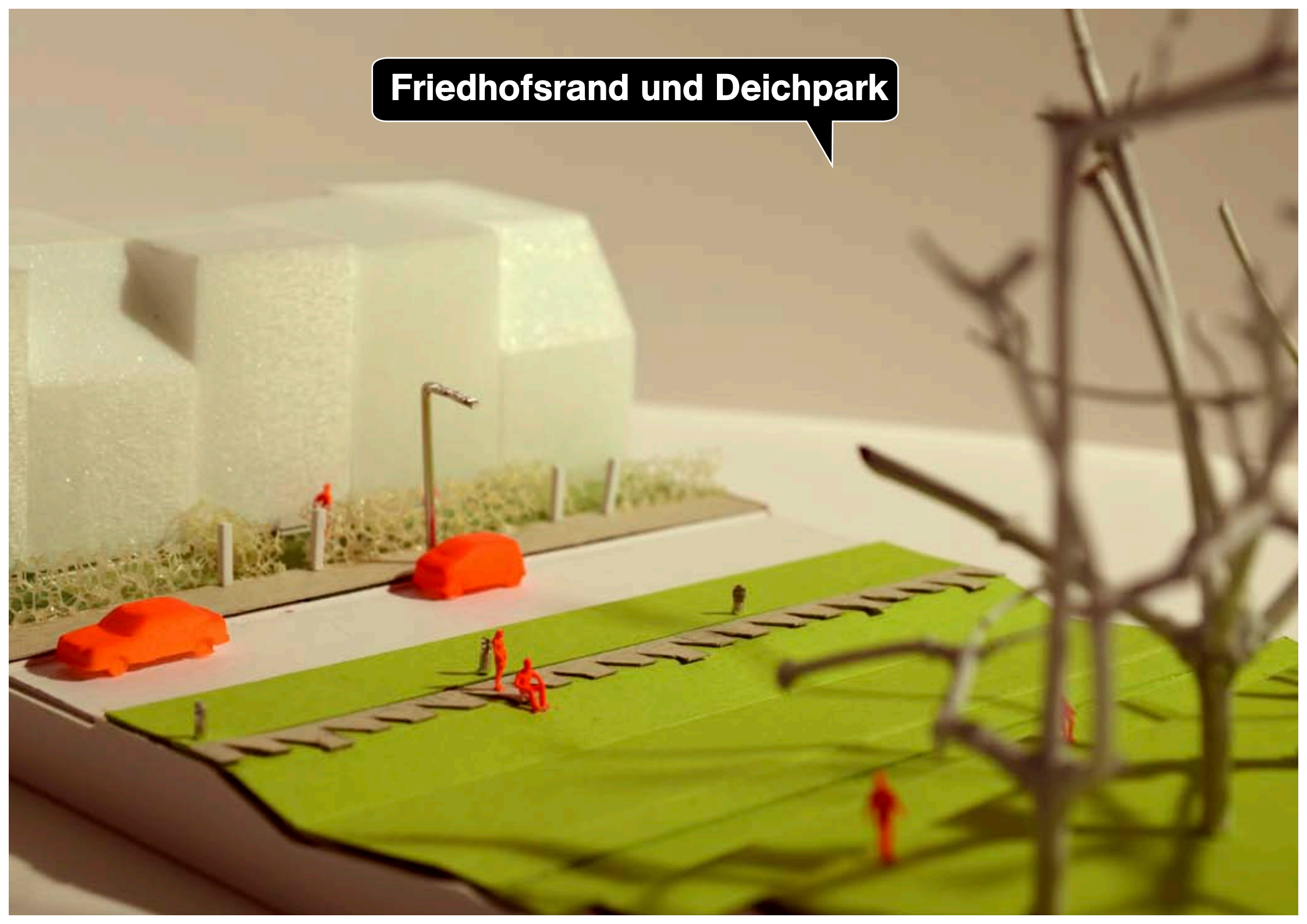
Holtenbroek Zwolle



Friedhofsrand und Deichpark



Friedhofsrand und Deichpark





Regenwasserretention



Natur

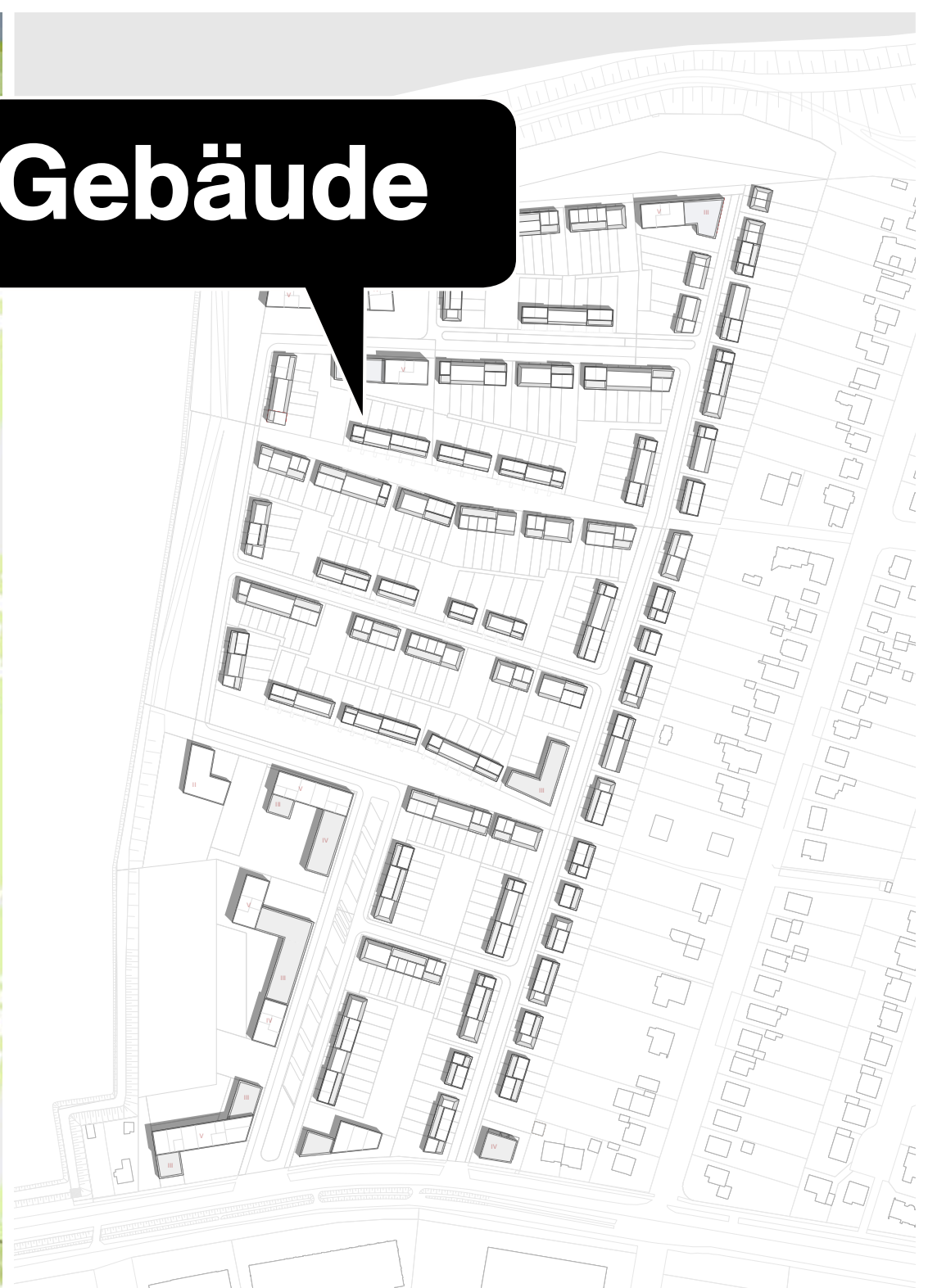
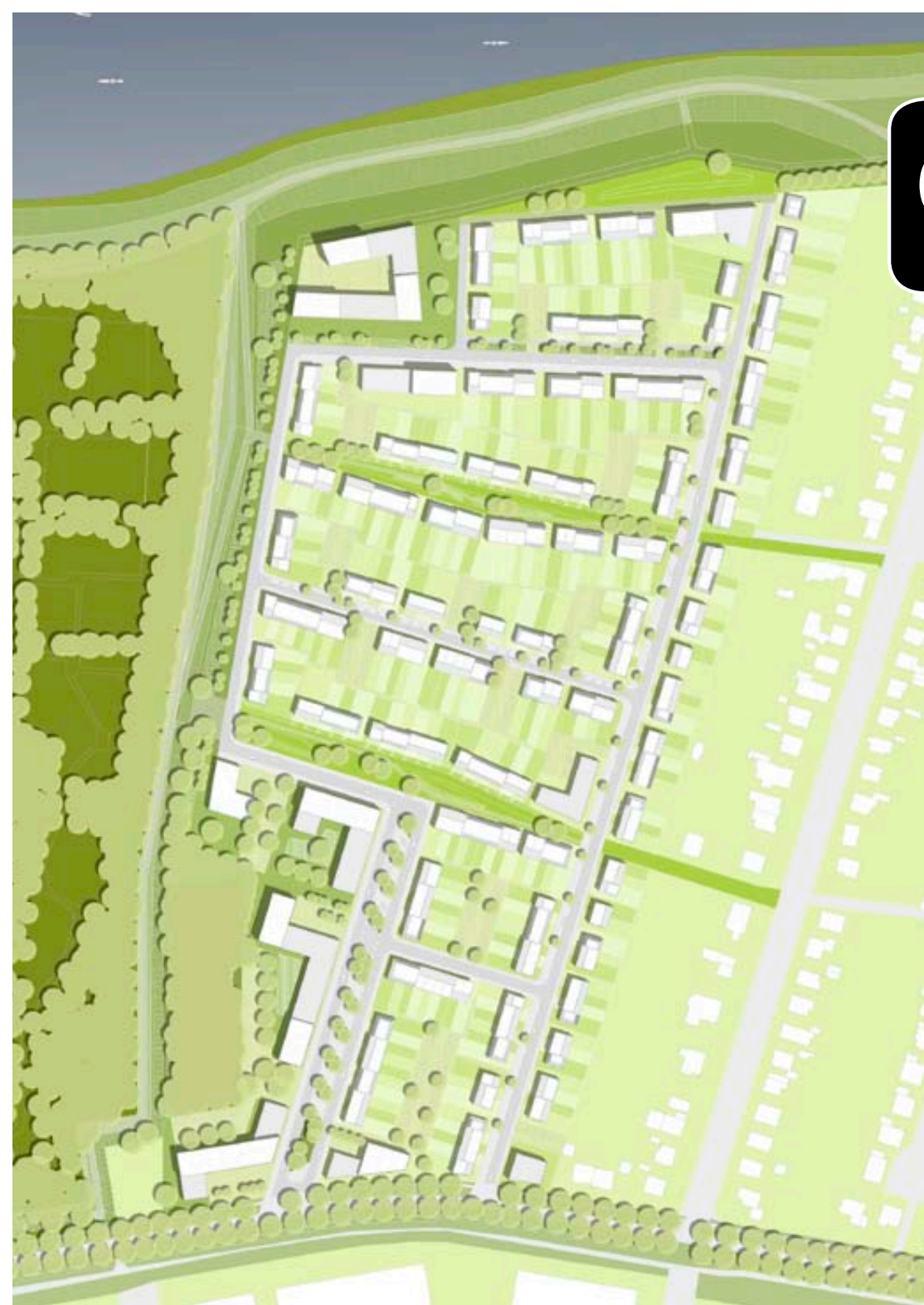


Regenwasserretention



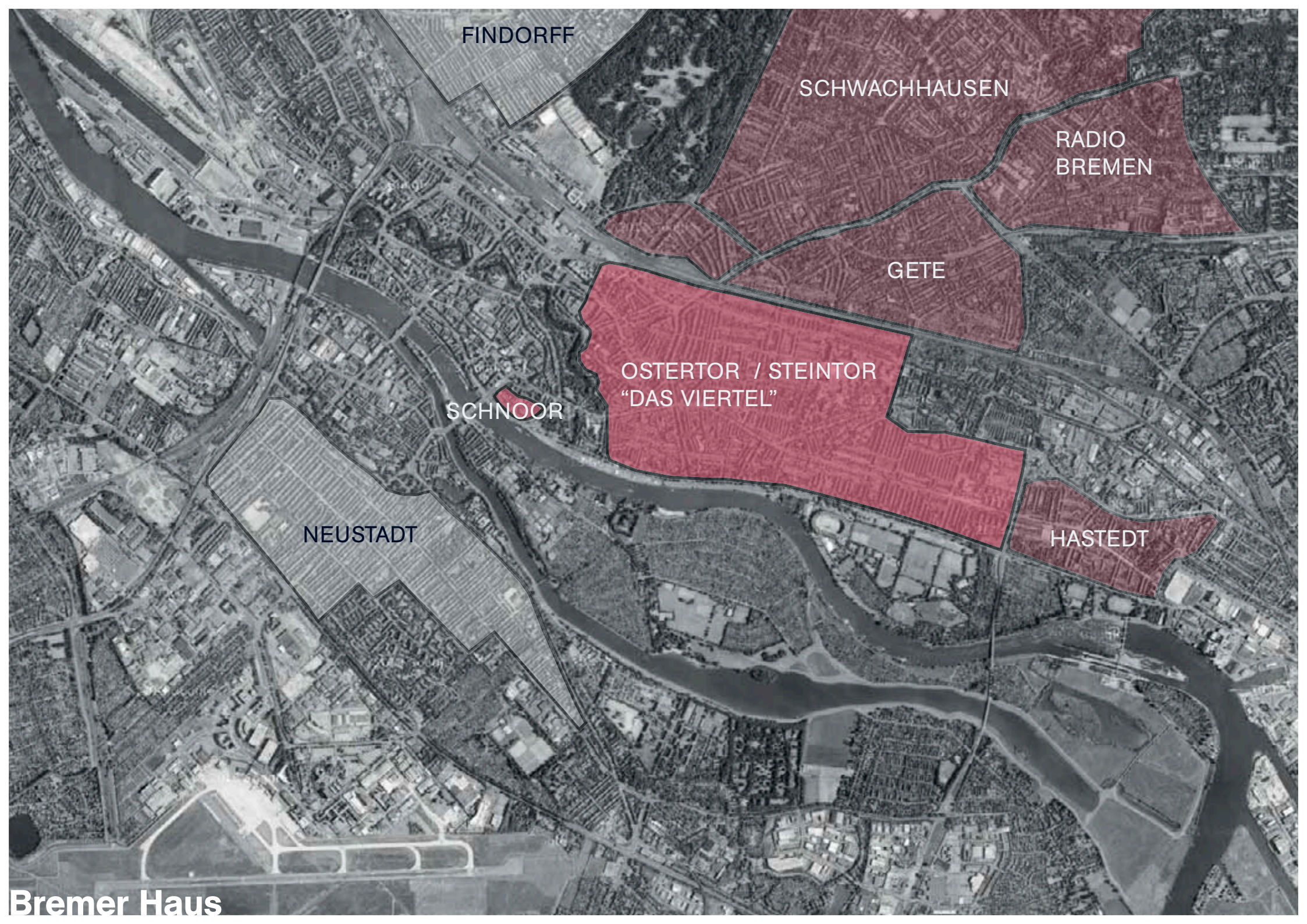
Spielen

Gebäude





Gartenstadt



FINDORFF

SCHWACHHAUSEN

RADIO
BREMEN

GETE

SCHNOOR

OSTERTOR / STEINTOR
"DAS VIERTEL"

NEUSTADT

HASTEDT



Bremer Haus

Abwechslung und Homogenität



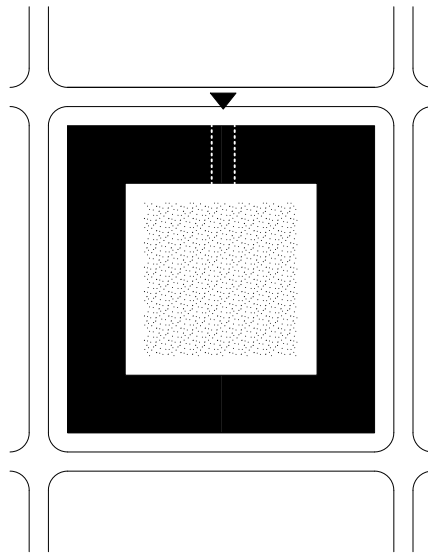
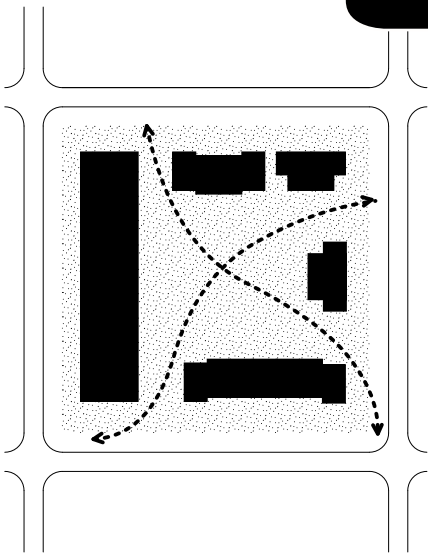
Homogenität

- _ 3 Fensterachsen
- _ Detailierung
- _ Dächer
- _ Vorgärten

Variation

- _ Farbe
- _ unterschiedliche Höhen

Mehr ist manchmal weniger!



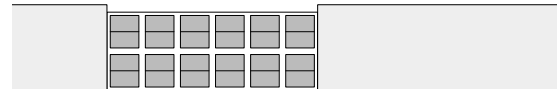
↑ Weniger Wohnungen
↓ Mehr Wohnungen



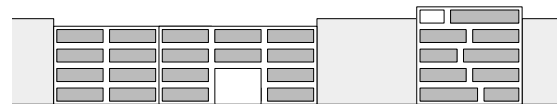
freistehende Häuser



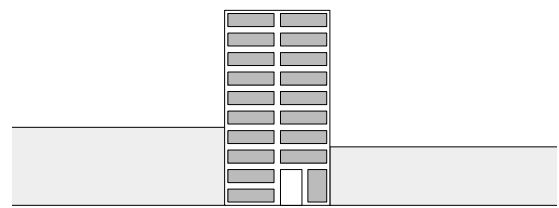
Reihenhäuser



Duplex und Sondertypen



Geschosswohnungsbau



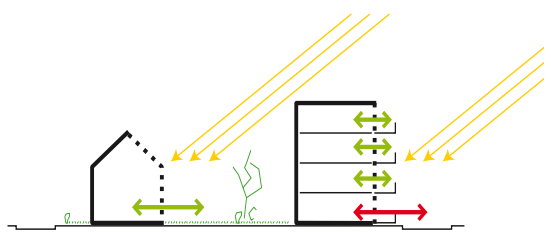
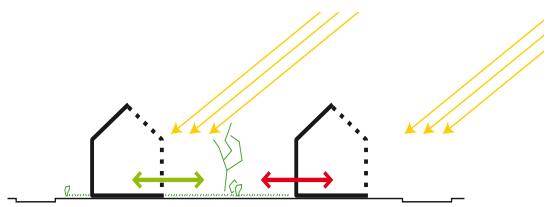
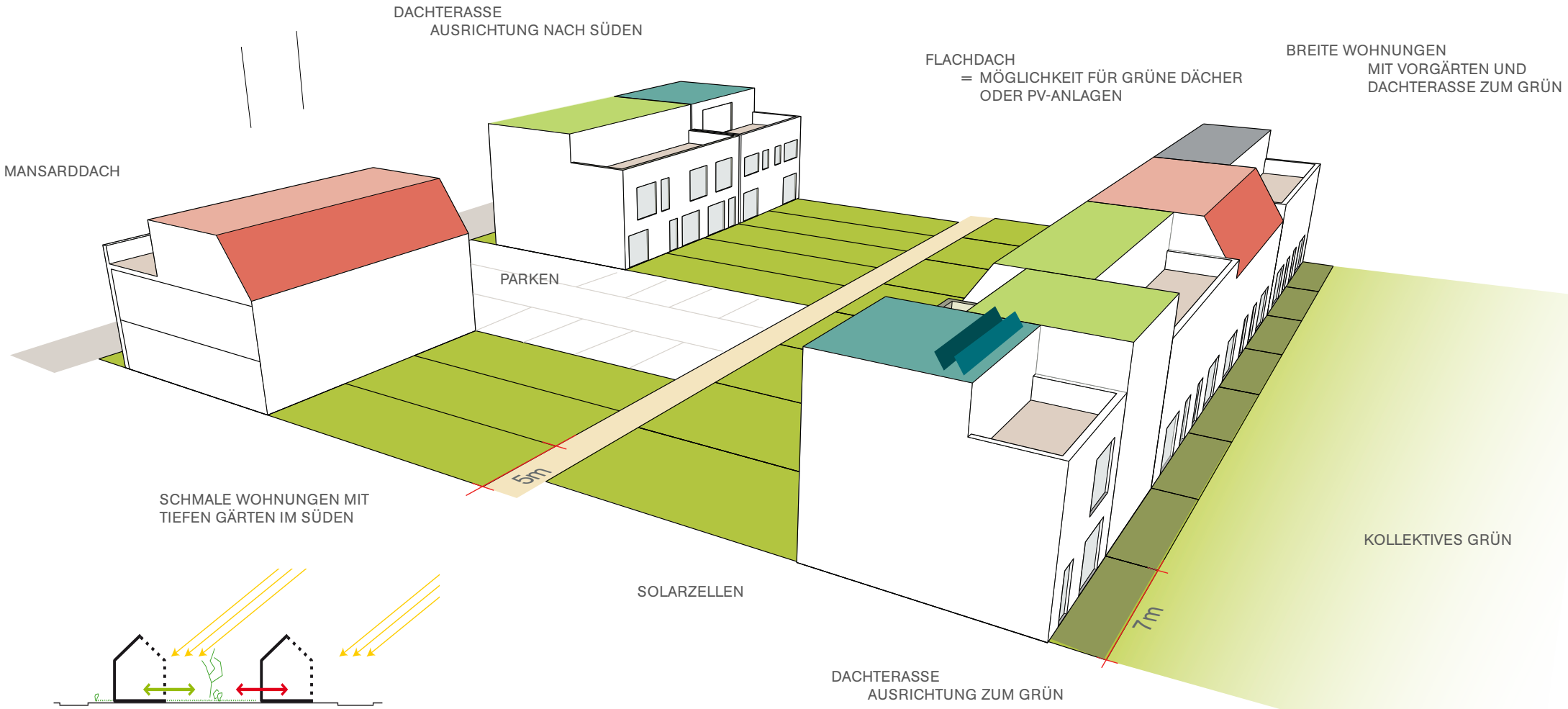
Hochpunkte



Struktur der Umgebung

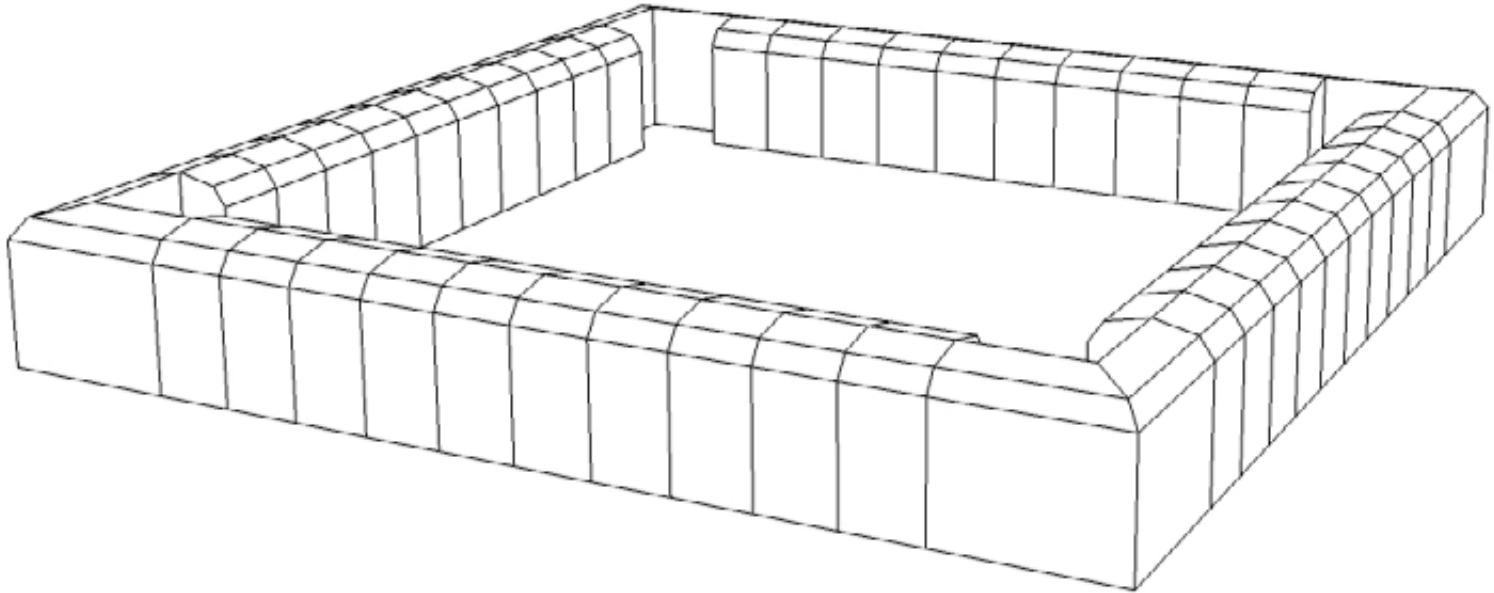


Typologien



Typologien

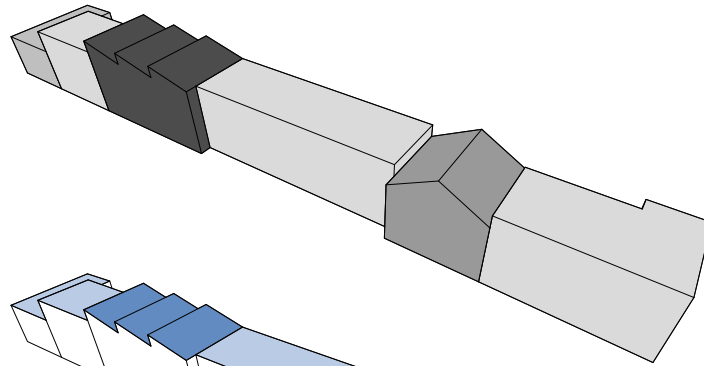
Monotonie?



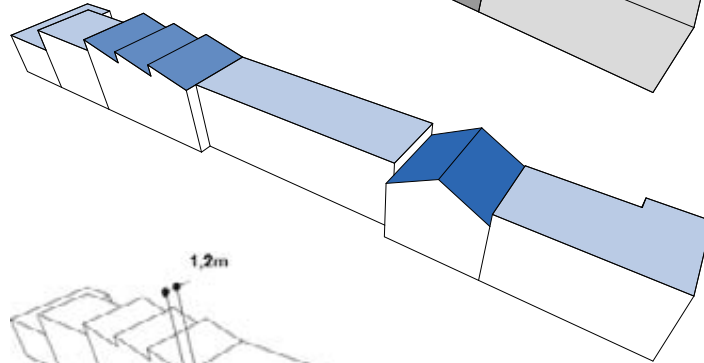


Bremer Neustadt

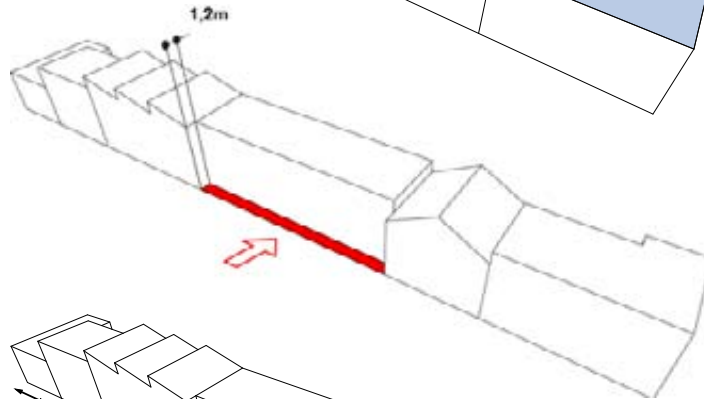
Wohnungstypologie



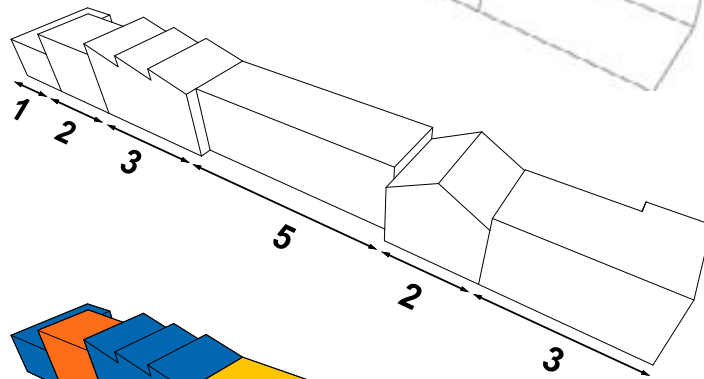
Dachform



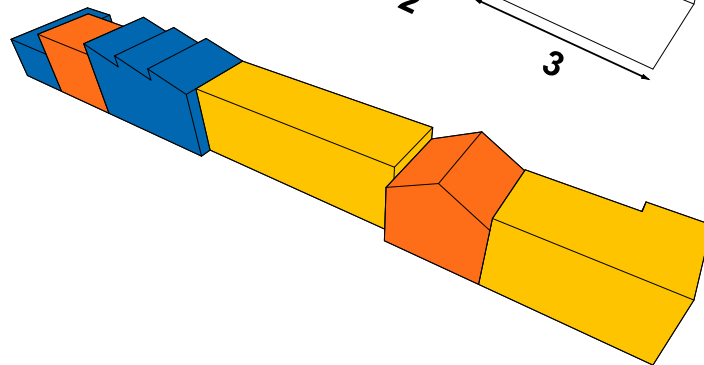
Baulinie



Länge der Einheiten



Architektenverteilung



Abwechslung und Homogenität

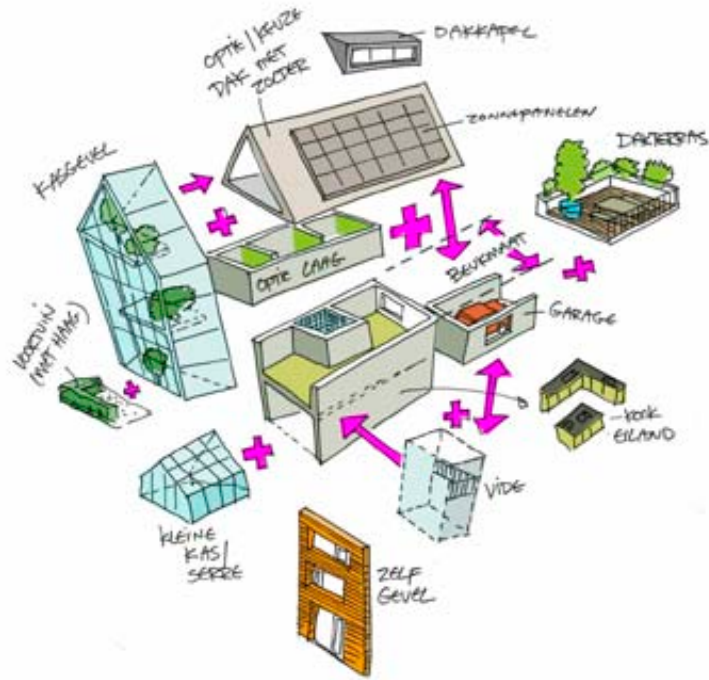


**Variation und Effizienz
Tilburg**

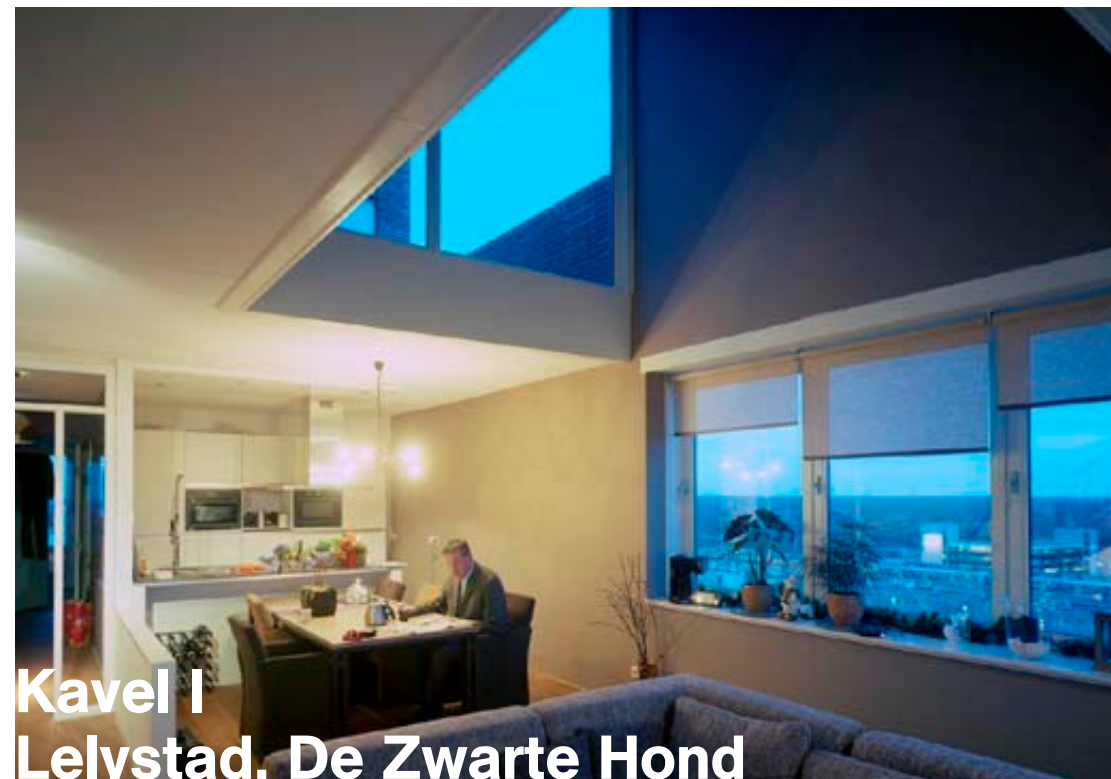


**Baugruppe
Meerstadt**

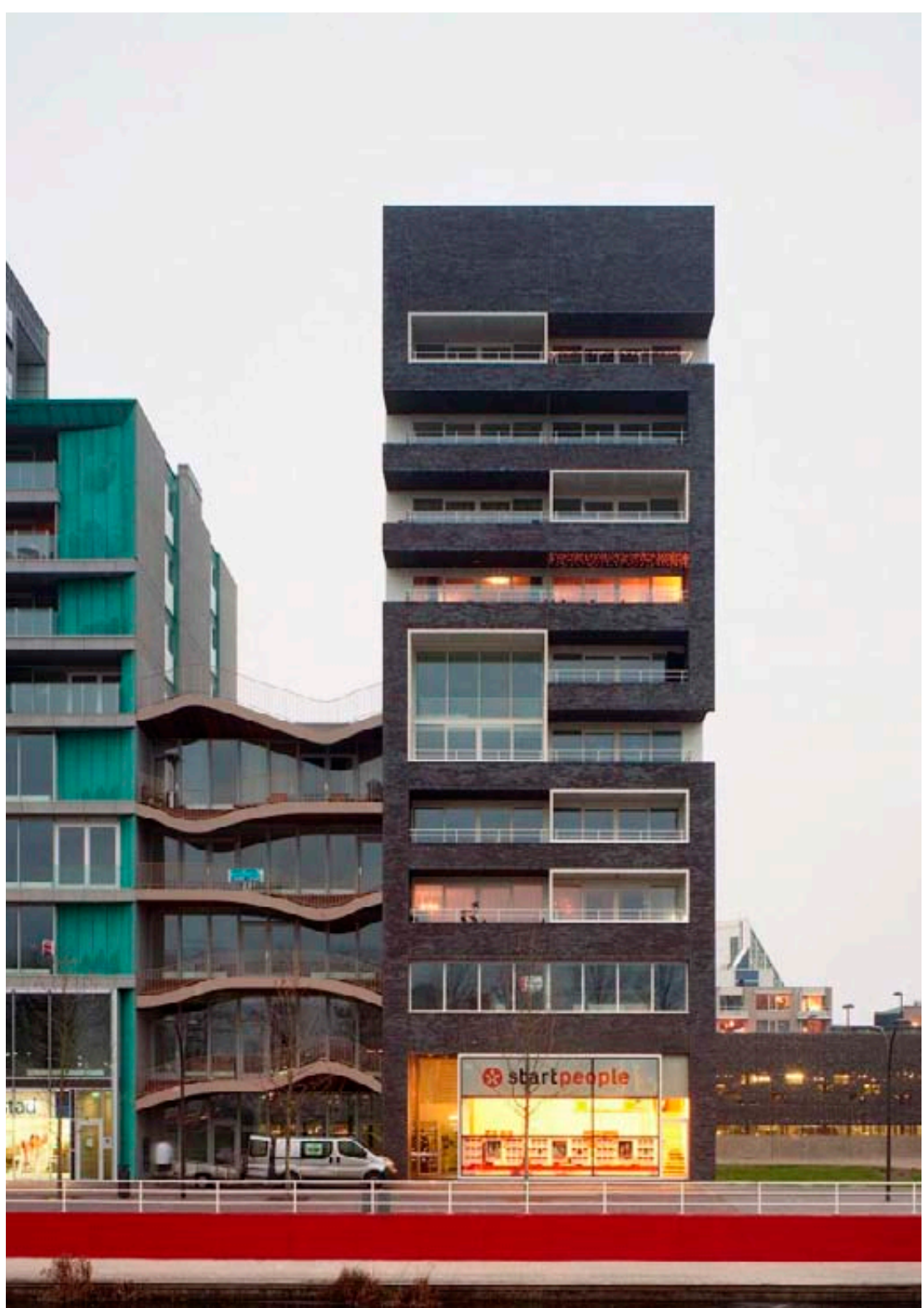




**Wohnen nach eigenem Geschmack
Utrecht**

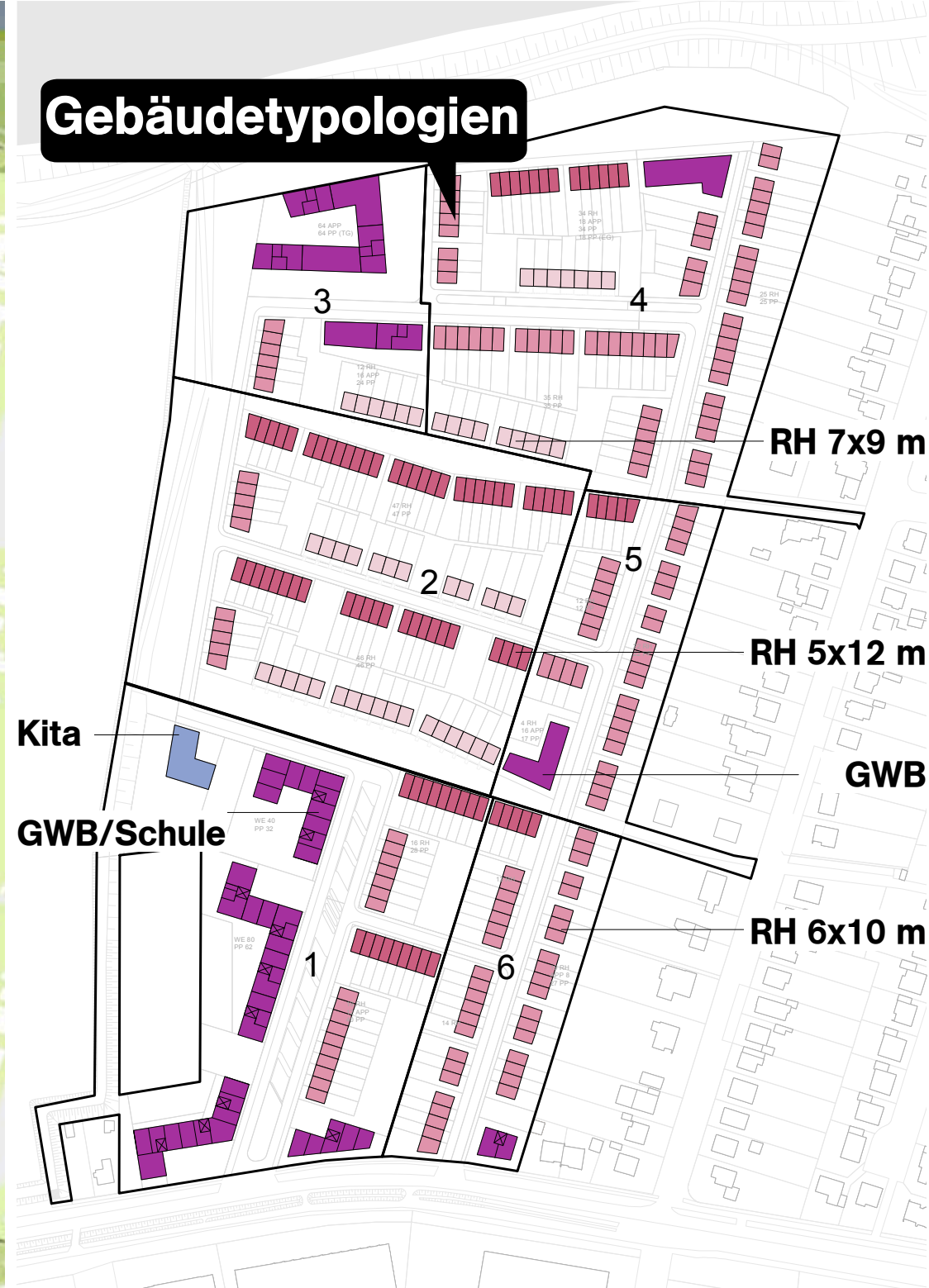


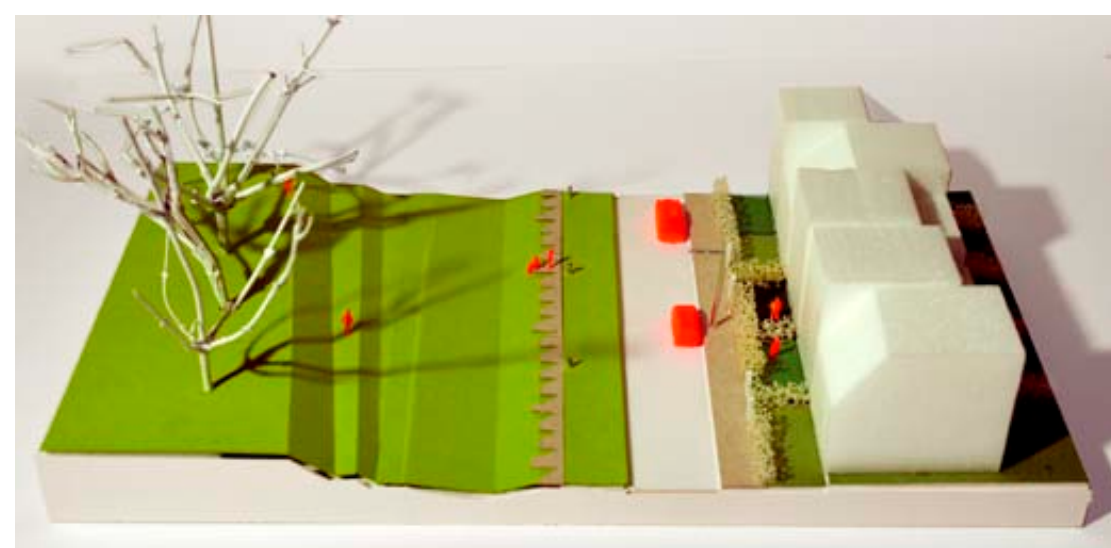
Kavel I
Lelystad, De Zwarte Hond





Gebäudetypologien





Viel Spaß in den Arbeitsgruppen!